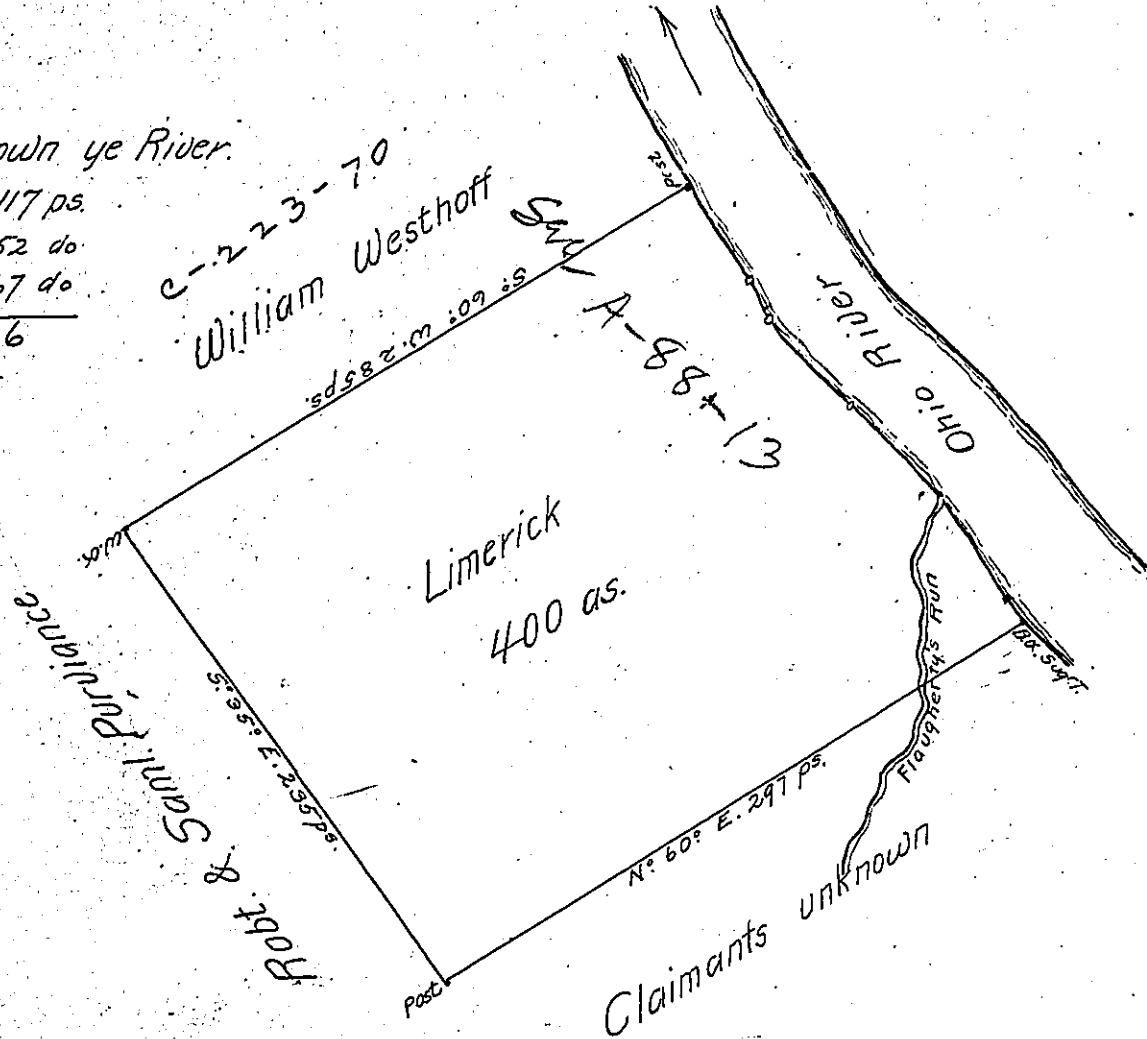


Courses & down ye River.

N° 37° W. 117 ps.
N° 44° W. 52 do
N° 34° W. 67 do
236

C-223-70
William Westhoff



A Draught of a Survey called Limerick situate on the Ohio River in

Washington County, contain^g 400 as. and the usual allow^{ce} for Roads &c. executed.

Oct. 18th. 1786 in Pursuance of a Warrant granted to James Carson for 400 as.

dated Oct. 17th. 1785.

Presley Nevill }
Mattw. Ritchie } Df.

Jno. Lukens Esqr. S. Genl.

IN TESTIMONY that the above is a copy of the original remaining on file in the Department of Internal Affairs of Pennsylvania, made conformably to an Act of Assembly approved the 16th day of February, 1833, I have hereunto set my Hand and caused the Seal of said Department to be affixed at Harrisburg, this twenty-seventh day of April 1904.



Joseph P. Brown
Secretary of Internal Affairs.